



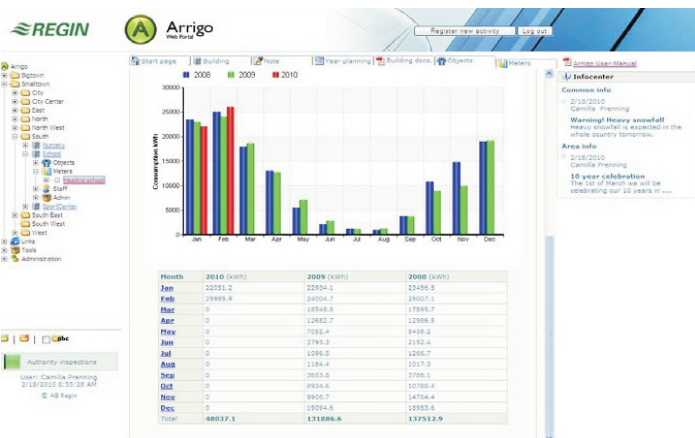
Regin SCADA Software For Complete Building Control & Automation

- Software specifically designed for use together with Regin's EXO hardware. The result is a highly effective and user-friendly building automation system with software that takes full advantage of all the possibilities offered by the hardware.



Arrigo

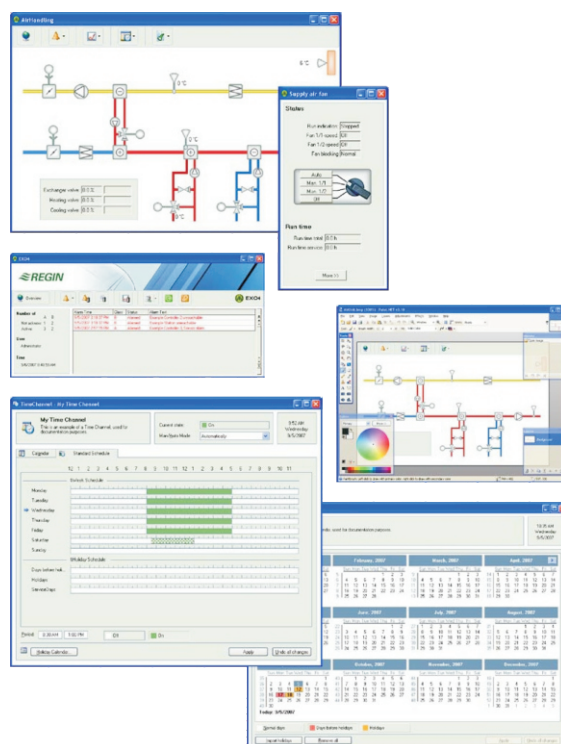
- Web-based portal for planning of operation, maintenance and administration for more efficient operation and energy use
- Planned service measures.
- Error reports.
- Alarm reports and measures taken.
- Time and energy reports, based on the area of the building, etc.
- Compare the energy consumption of your properties over a period of up to five years.
- Automatic connection to different service companies.



EXO4

- Powerful SCADA system giving you complete control and overview of one or many buildings. You can handle alarms and access all important parameters, functions and data.
- Dynamic visualization of plants and processes
- Real-time curves and trends.
- Time channel program.
- Historical database.
- Alarm and status supervision with three alarm priority levels.
- Registration and handling of events.
- Support for SQL.
- Client-server for large systems with many workstations.
- Script language available.

EXO4 version	Max. No. of I/Os	Several computers connected in a network	Version	Type
EXO4 2009 TRIAL	75 I/Os	No	-	EXO4TRIAL
EXO4 2009 XS7	300 I/Os	Yes	PC card USB	EXO4XS7PCC-2009 EXO4XS7USB-200
EXO4 2009 S7	500 I/Os	Yes	PC card USB	EXO4S7PCC-2009 EXO4S7USB-2009
EXO4 2009 M7	1000 I/Os	Yes	PC card USB	EXO4M7PCC-2009 EXO4M7USB-2009
EXO4 2009 L7	3000 I/Os	Yes	PC card USB	EXO4L7PCC-2009 EXO4L7USB-2009
EXO4 2009 XL7	Unlimited	Yes	PC card USB	EXO4XL7PCC-2009 EXO4XL7USB-2009



EXOopc Driver

- EXOopc Driver makes it possible to connect EXO controllers to any software supporting the OPC standard. This means that most of the SCADA software in the market today can be used together with Regin's controllers. The possibility of communication with various OPC clients/servers can easily be controlled using the Matrikon OPC Sniffer.
- All the data will then be available via the OPC interface.

Discription

EXOopc Driver

Type

EXOOPC



EXOhotel

- EXOhotel is an add-on program for EXO4 which connects a hotel booking system using the Fidelio protocol with the full range of functionalities of the EXO4 system. Heating and cooling in each hotel room can be controlled to save energy when the room is empty and provide a comfortable indoor climate when the room is occupied.

Discription

Hotel booking system

Type

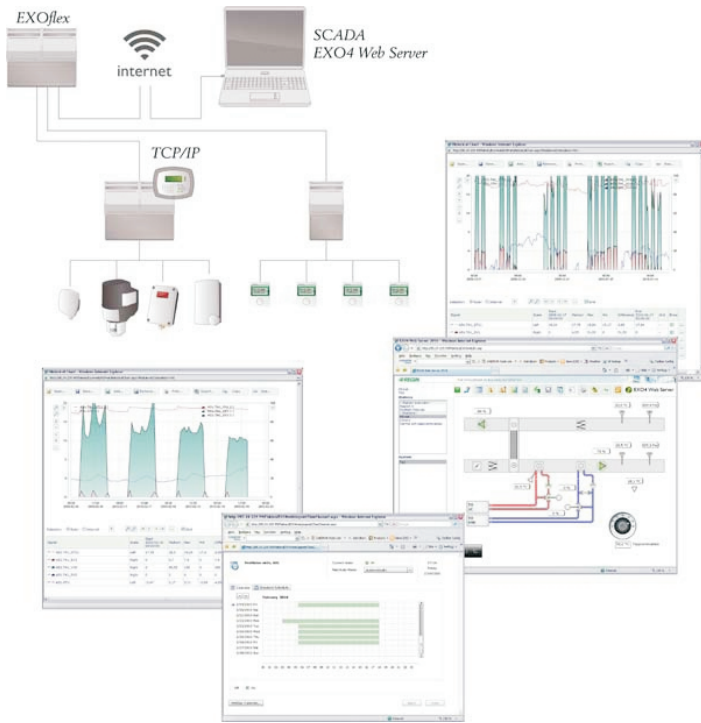
EXOHOTEL



EXO4 Web Server

- EXO4 Web Server is a web-based SCADA system which gives access to required information via the Internet or an intranet solution.

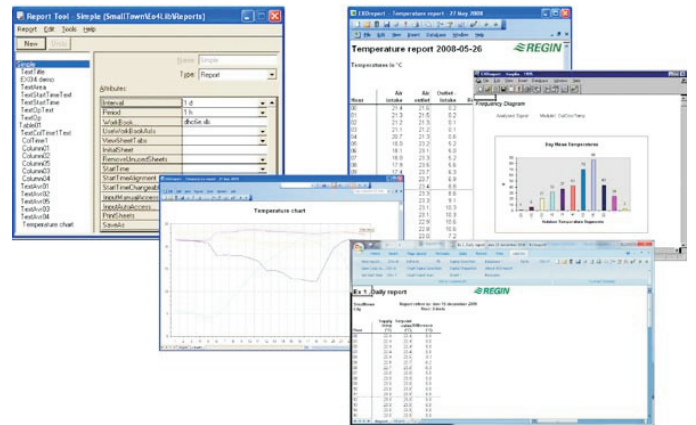
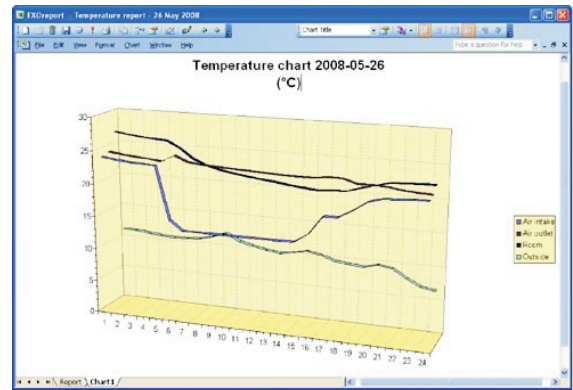
Discription	Number of I/Os	Type
EXO4 Web Server 2009XS	300 I/Os	EXO4WEB-XS7
EXO4 Web Server 2009S	500 I/Os	EXO4WEB-S7
EXO4 Web Server 2009M	1000 I/Os	EXO4WEB-M7
EXO4 Web Server 2009L	3000 I/Os	EXO4WEB-L7
EXO4 Web Server 2009XL	Unlimited	EXO4WEB-XL7



EXOreport

- EXOreport is an add-on program for EXO4 which simplifies the analyses of operation costs and energy consumption. It helps you create diagrams, trend curves etc. in Microsoft Excel format. EXOreport automatically generates and prints your monthly or weekly reports.

Discription	Type
EXOreport 2010	EXOREPORT



Nimbus Alarm Server 2

- Software for use together with EXO4. The system sends alarms from your system via e-mail, sms, fax etc. Requires hardware key version 7 or later.

Discription	Type
Nimbus alarm server 2	NIMBUS-2009



Weatherlink

- Weatherlink is the ultimate solution for energy-efficient climate control based on weather forecasts. A forecast receiver is connected to the Regin controller instead of an ordinary outdoor temperature sensor. The receiver combines outdoor temperature data with data received from a weather satellite, in order to control the indoor climate by thinking ahead, which in effect will reduce energy costs substantially

Discription	Type
Forecast control	WEATHERLINK



EXOdesigner

- All EXO controllers are fully software compatible and are programmed using EXOdesigner, a PC-based development environment.

Discription	Type
Development software EXOdesigner 2009	EXODESIGNER2009

