

Energy Meter



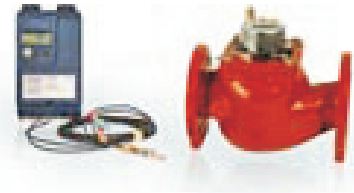
Compact Energy Meter

- Model : MSH
- MSH is a range of compact energy meters with coaxial multi-jet flow sensor, intended for heating or cooling.
- Installation is in the return pipe.
- Models : -
 - Fixed/Detachable.
 - $0.6\text{m}^3/\text{hr}$ - $25\text{m}^3/\text{hr}$.
 - Optional pulse or M-Bus output.



Energy meter with Flow Sensor (For Horizontal/Vertical Installations)

- Model : S2C + MTH
- S2C is a range of electronic measuring units which can be combined with all types of volumetric flow meters. The meters are supplied with two temperature sensors and a 3 m factory mounted cable. They are intended to be used in heating or cooling systems.
- Horizontal :
 - Flow - $1.5\text{m}^3/\text{hr}$ - $10\text{m}^3/\text{hr}$
 - Size - DN20 -Dn40 (Thred or Flange)
- Vertical :
 - Flow- $1.5\text{m}^3/\text{hr}$ - $10\text{m}^3/\text{hr}$
 - Size - DN20 -DN40(Upword or Downward Flow)



Energy meter with Woltman Flow (For Any Mounting Position)

- Model : S2C+WPTH
- Flow - $15\text{m}^3/\text{hr}$ - $600\text{m}^3/\text{hr}$
- Size - DN50 -DN300 (Flange)
- Option :
 - M-Bus Interface to BMS
 - Special program for cooling management
 - Energy billing software